

# BRÃEVAL<sup>®</sup>

MMXXX





We are a product of our environment! This year I visited Scotland several times for business and of course pleasure. We met with and were granted an exclusive Registration from the Scottish Register of Tartans. We worked with our mills, and we finalized our new Storm Glen Waxed Cotton construction process and colors. Scotland always reinvigorates and inspires me! We sipped a few drams of whisky and new Scottish style gins. The environment was incredible allowing B R A E V A L to create our most distinguished line yet. At BraeVal, we stand for authenticity and a BraeValian lifestyle that values grace, elegance, and performance in the field or on the town. We continue this tradition that has endured for generations: American design born of comfort ~ Time tested classics in the Scottish tradition~ Uniquely American and distinctly BraeVal.

**-Founder Gregor McCluskey**



**BIG JOCK MCCLUSKEY**

## **ABOUT OUR SYMBOL**

*Big Jock McCluskey who came from the crags and BraeVal of Scotland brought the Rob Roy MacGregor tartan to America in the 1800's.*

*Legend has it that Native Americans had never seen cloth dyed a brighter red, and believed it was made from the blood of McCluskey's prey and enemies. Like many things that crossed the Atlantic, the tartan received a new name and became uniquely American and distinctly BraeVal. Buffalo Plaid was born...*



**LIKE MANY THINGS THAT CROSS THE ATLANTIC  
AND TAKE ON A NEW NAME, BUFFALO PLAID WAS BORN!**



## FORM, FUNCTION & STYLE

### FOR THE SPORTING ADVENTURER IN THE FIELD OR ON THE TOWN

BraeVal is a Scottish word for the Upland River Valleys that exist between the mountains and rugged brae of the Scottish highlands, where streams and rivers tumble to loch and sea. It is pronounced "brave-all." It is a land of arduous challenges in a place where sporting adventure is welcomed as part of a very robust and BraeValian lifestyle that values grace, elegance, and performance in the field, or on the town; as genuine as the sporting life we share. At BraeVal, we stand for authenticity and our mission is to outfit you with the most comfortable apparel afield. *WELCOME TO THE BRAEVAL TRADITION.*

### SUPERIOR FABRICS FOR SUPERIOR GARMENTS



#### TIERA™ FABRIC - Natures Technology

A superior fabric for a superior shirt. Technically-advanced proprietary all-natural Tiera fabric ring spun of Merino wool, and long staple cotton resonates with the earth we travel on the way to adventure. Tiera fabrics provide climate control by self-regulating in various temperature spectrums. A superior, durable, luxuriant and all-natural alternative to synthetics, and petroleum-based performance fabrics. Wool, the strongest and best wicking fiber in the world; fused with long staple cotton known for its softness, comfort and high absorption blended together creates an outstanding performance fabric. Tiera fabrics are *of the earth* 100% natural, sustainable, renewable and biodegradable. Our colors and patterns are designed by us and inspired by the classic checks and plaids historically used as sporting camouflage in the highlands. The goal of Tiera fabrics is total comfort, whether in the field, or on the town.



#### BRAEVAL STORM™ GLENTM Wax Cotton

Scottish seafarers created the first waxed cotton fabric in the late 1700s by applying fish oil and grease to their garments, making them impervious to the bracing Scottish elements. Today, BraeVal sources STORM GLENTM wax cotton from the world's only vertically integrated Mill that weaves and impregnates our threads versus spraying. The highly sought-after STORM GLENTM wax cotton has reached its pinnacle in the form of BraeVal garments! The impregnating process and formulation of various waxes provide lifelong resistance to inclement weather. Our proprietary blend of waxes imparts a high degree of water repellency, low temperature flexibility, high-melt-point, shorter break in period, unique patinas, and perfect drape adding to the extreme durability of waxed cotton. Over time, you will see and feel the unique patinas and individual character that BraeVal and STORM GLENTM wax cotton impart. Enjoy BraeVal's STORM GLENTM wax cotton in the field or on the town!



#### BUFFALO LEATHERS "Not Your Ordinary Leather"

Rob Roy MacGregor Buffalo Plaid meets our Buffalo Leathers. Our hand-selected, free-range Buffalo hides produce a very durable and pliable leather with unique patinas and a strength not found in ordinary leather. BraeVal uses hand-selected Buffalo hides in our vests, over shirts, jackets, and pants. Thick full-grain hand cut Buffalo hide offers rich, natural grain, earthy patterns, not readily found in cowhide. We offer our Buffalo in several proprietary finishes in: Nubuck, Wax Finish, Pebbled etc.



#### SHEPHERD'S TWEED

We traveled to the UK to develop our Shepherd's Tweed from sheep that live in the harshest climate. Woven in a traditional yet mid-weight woolen herringbone for superior wicking, wind protection, and total climate control. All-natural long staple fibers spun and woven in the British Isles the old-fashion way makes our Shepherd's Tweed an heirloom quality piece generational in value. Each BraeVal Shepherds Tweed is **hand cut and tailored** for an active fit in the traditional way using only the **finest Tweed** and trimmings, milled and **woven in the British Isles**.



#### VINTAGE WEAVE MOLESKIN

Our Vintage Weave Moleskin is imported and milled to our specification. Vintage Weave Moleskin was developed as a light weight, hard wearing, enduring cloth, that provided miners and steelworkers with lasting durability while providing comfort. Today, these attributes have made it popular in country wear and field sports. Our combination of dense weave and natural cotton fiber make it virtually wind-proof, warm in winter, yet cool in spring and summer. It is also snag-resistant and quiet in the bush.



# FIELD DUTY™ COLLECTION

## FIELD DUTY COLLECTION

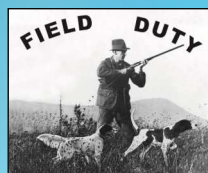
<b>GUNNISON WOOL</b>	<b>\$225.00</b>
<b>GRAND UPLANDER WOOL</b>	<b>\$225.00</b>
<b>GUNNISON CANVAS</b>	<b>\$149.00</b>
<b>GRAND UPLANDER CANVAS</b>	<b>\$149.00</b>

## S-XXL - Wmn-S-XL

BraeVal introduces a remarkable value in our New Field Duty Collection: Designed as a JACSHIRT in our **Brush Cutter Canvas™ (8.5 or 6.5 oz)** or **Woodland Woolens**.

Available in two models both with a classic Belted Bi swing Back:

•**GRAND UPLANDER JACSHIRT Model ~ Double Shooting patches**  
•**GUNNISON JACSHIRT Model ~ Double Pleated Pockets and Elbow patches.** The FIELD DUTY COLLECTION functions as a rugged layering piece or can be worn as a shirt.



**Available in three unique fabric constructions:**

**Woodland Woolens** is a dense woven wool in traditional patterns. WW styles are appointed with leather collars and patches. Buffalo plaid signature trim under cuffs and neck band.

### 1. WOOL 9.5 oz MID/HEAVY WEIGHT WOOL

**Brush Cutter Canvas™ 8.5 or 6.5 oz.** Canvas is pigment-dyed providing unique patinas. A proprietary high tensile weaving process provides added protection when working thick cover. Appointed contrasting Waxed cotton patches and/or Arm Guards. Buffalo plaid signature trim under cuffs, collar and neck band.

### 2. 8.5 oz HEAVY WEIGHT BRUSH CUTTER PIGMENT DYED CANVAS

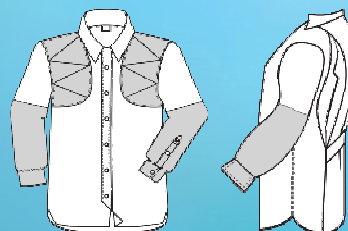
### 3. 6.5 oz MID WEIGHT BRUSH CUTTER CANVAS



GUNNISON



GRAND UPLANDER WOOL



GRAND UPLANDER CANVAS

## GUNNISON

GUNI-W3 Tan/Brown Check Woodland Woolens 9.5 oz

GUNI-W4 Green/Black Check Woodland Woolens 9.5 oz

GUNI-W5 Red/Black Woodland Woolens 9.5 oz

GUNI-BC-8.5 CURRY TAN Brush Cutter Canvas Heavy Weight 8.5 oz

GUNI-BC-6.5 COCO BROWN Brush Cutter Canvas Mid Weight 6.5 oz

## GRAND UPLANDER:

GRND UP-W3 Tan/Brown Check Woodland Woolens 9.5 oz

GRND UP-W4 Green/Black Check Woodland Woolens 9.5 oz

GRND UP-W5 Red/Black Woodland Woolens 9.5 oz

GRND UP-BC-8.5 CURRY TAN Brush Cutter Canvas Heavy Weight 8.5 oz

GRND UP-BC-6.5 COCO BROWN Brush Cutter Canvas Mid Weight 6.5 oz

W-GRND UP-BC-8.5 CURRY TAN Brush Cutter Canvas Heavy weight 8.5 oz

BC-6.5 COCO  
BROWN

BC-8.5 CURRY  
TAN

**BRUSH  
CUTTER  
CANVAS™**





GUNI W 4



GUNI W 5  
Red /Black Plaid



GRND UP W 4 Green/Black Check



Left GRND UP W 5 Red /Black Plaid  
Right GRND UP W 3 Tan /Brown Plaid



Left GRND UP BC 6.5 Brush Cutter Canvas  
Right GRND UP 8.5 Brush Cutter Canvas



Left GUNI W 5 Red /Black Plaid  
Right GUNI W 3 Tan /Brown Plaid

**WOODLAND  
WOOLENS**

TAN/BROWN  
CHECK  
W-3

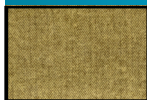
GREEN/BLACK  
CHECK  
W-4

RED/BLACK  
CHECK  
W-5



6

## LITCHFIELD SHIRT

**(LIT) Men's M-XXL****\$190.00****160****102****112****129****130****136****150****151****152**

Whether on the moors, or under a sport coat, the Litchfield's details provide uncompromised comfort and style. Hidden vented bi-swing back, button-down collar, large double-layer breast pocket, accessory loop on pocket, locker loop on yoke, below the waist zippered security pocket, triple stitching, box-stitching at corners.

Fabric/Patterns and Colors

**LIT-160 B R A E L O C H Estate Plaid****LIT-102 Shetland Flannel Micro Herringbone**

Saffron 100% Cotton

**LIT-112 Uplander Estate Plaid****LIT-129 Butterscotch Bold Check All**

Season 100% Cotton Silk Finish

**LIT-130 Gun Check - Cream, Black, Blue****LIT-136 Two Over Tattersall - Blue**

All Season 100% Cotton Silk Finish

**LIT-150 Chieftain Micro Check****LIT-151 Vintage Green Tattersall****LIT-152 Scoutlander Plaid****LIT-805 Rangeley District Tartan <sup>TM</sup>**SEE WEBSITE FOR  
ADDITIONAL PATTERNS

LIT-150



LIT-151



## (PAD) Men's M-XXL

\$215.00

Refined style with two flat-sewn, yet expandable, pleated pockets and elbow patches for durability. Hidden vented bi-swing back, button-down collar, oversized pleated flat pockets, treated cotton elbow patch, accessory loop on pocket, locker loop on yoke, below the waist zippered security pocket, triple-stitching, box-stitching at corners.

Fabric/Patterns and Colors

**PAD-160 BRAELOCH Estate Plaid**

**PAD-129 Butterscotch Bold Check All**

Season 100% Cotton Silk Finish

**PAD-130 Gun Check - Cream, Black, Blue**

**PAD-136 Two Over Tattersall - Blue**

All Season 100% Cotton Silk Finish

**PAD-150 Chieftain Micro Check**

**PAD-151 Vintage Green Tattersall**

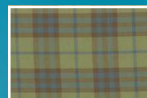
**PAD-152 Scoutlander Plaid**

**PAD-200 Portobella Brown Cav Twill**

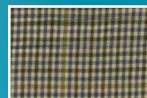
**PAD-805 Rangeley District Tartan™**



SEE WEBSITE FOR  
ADDITIONAL PATTERNS



160



150



151



152



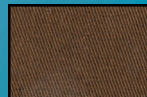
129



130



136



200



805

PAD-160



PAD-152



PAD-150







8

## EXVENTURER SHIRT

**(EXV) Men's M-XXL****\$215.00****160****120****129****130****136****200****150****151****152**

"The Most versatile shirt in the world" The ExVenturer has functional yet subtle features. Our best-seller and our Founders favorite shirt model. Wear it with a sport coat for that sporting adventurer & intrepid style and feel. Hidden vented bi-swing back, zip vent sleeves, stitched epaulets, button-down collar, oversized double layer bellows pockets with flaps and hidden buttons, accessory loop on left pocket, locker loop on yoke, below the waist zippered security pocket, triple stitching, box stitching at corners.

Fabric/Patterns and Colors

**EXV-160 B R A E L O C H Estate Plaid****EXV-120 Uplander Bold Gun Check****EXV-129 Butterscotch Bold Check All Season**

100% Cotton Silk Finish

**EXV-130 Gun Check - Cream, Black, Blue****EXV-136 Two Over Tattersall - Blue**

All Season 100% Cotton Silk Finish

**EXV-150 Chieftain Micro Check****EXV-151 Vintage Green Tattersall****EXV-152 Scoutlander Plaid****EXV-200 Portobella Brown Cav Twill****EXV-600 Rob Roy Highlander Plaid****EXV-805 Rangeley District Tartan™**SEE WEBSITE FOR  
ADDITIONAL PATTERNS

EXV-160



EXV-151

**600****805**

**(ART) Men's M-XXL/Women's S-XL****\$215.00**

The goddess of the hunt. It has been said the Artemis is too nice for the hunt, yet functional, rugged sophisticated a true thoroughbred in the field, or on the days course. Quilted treated cotton right shoulder patch, hidden vented bi-swing back, button-down collar, quilted oversized double-layer bellow pocket with flap and hidden button, accessory loop on pocket, locker loop on yoke, below-the-waist zippered security pocket, triple-stitching, box-stitching at corners.

**Fabric/Patterns and Colors****ART-160 B R A E L O C H Estate Plaid**

ART-129 Butterscotch Bold Check All Season  
100% Cotton Silk Finish

ART-130 Gun Check - Cream, Black, Blue

ART-136 Two Over Tattersall - Blue All Season  
100% Cotton Silk Finish, Wmns, Lefty

ART-150 Chieftain Micro Check

ART-151 Vintage Green Tattersall

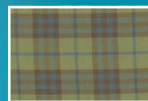
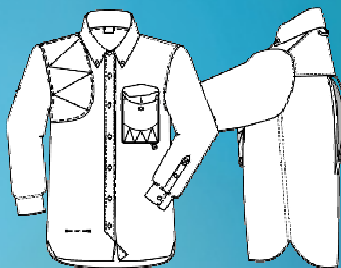
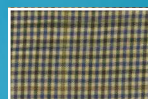
ART-152 Scoutlander Plaid

ART-805 Rangeley District Tartan™

LEFTY-ART-150 Chieftain Micro Check

W-ART-129 Butterscotch Bold Check All  
Season 100% Cotton Silk Finish

W-ART-151 Vintage Green Tattersall

**160****129****130****136****150****151****152****805**

SEE WEBSITE FOR  
ADDITIONAL PATTERNS

ART-160



ART-152



ART-150







## GRAND UPLANDER CANVAS

(W-GRND-UP)

**Women's S-XL**

W-GRND-UP-8.5

CURRY TAN Wmns

FIELD DUTY

JACSHIRT \$149



## ARTEMIS SHIRT

(W-ART)

**Women's S-XL**

W-ART-151 \$215

CALL FOR WOMEN'S  
PATTERNS & COLORS



## EXVENTURER JACKET

(W-JAC)

**Women's S-XL**

**IN BUFFALO, WAXED  
COTTON, MOLESKIN & TWEED**

W-JAC-EXV-016 Moleskin Camel

\$399

W-JAC-EXV-WX-003 Waxed Cotton

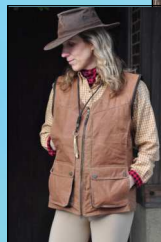
\$400

W-JAC EXV-900 Molasses

\$625

W-JAC-EXV-TW-003 Shepherd's Tweed

\$599



## ARTEMIS VEST

(W-V-ART)

**IN BUFFALO & MOLESKIN**

W-V-ART-015 Moleskin - Loden

\$249

W-V-ART-016 Moleskin - Camel

\$249

W-V-ART-001 Brown Nubuck Buffalo

\$280

*Other patterns and styles available.*



# TROSSACH JACKET & VEST

11

## TROSSACH JACKET

JACKET  
VEST

\$499.00  
\$299.00

### Men's M-XXL, Woman's S-XL

The Trossachs refers to an area of wooded glens and braes with quiet lochs, lying to the east of Loch & Ben Lomond generally known as the gateway to the Scottish Highlands. The Trossach was Scotland's first designated National Park. Our Trossach Jacket and Vests are inspired by the hardy folks such as Rob Roy MacGregor who, like him, will walk the many paths and trails that abound in the Trossach area

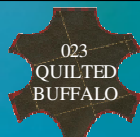
Our TROSSACH jacket and vests are crafted of waxed Buffalo newbuck in antique brown which highlights the buffalo's patinas. Stand up collar, diamond quilting, three zippered outer and two interior pockets. Functional rear carry-all zippered pocket. Perfection in the field or on the town.

Fabric/Patterns and Colors

**JAC TROS-023 Quilted Antique Brown Buffalo New Buck**

**V-TROS-023 Quilted Antique Brown Buffalo New Buck**

**W-V-TROS-023 Wmns Quilted Antique Brown Buffalo New Buck**





# EXVENTURER JACKET

**EXVENTURER JACKET IN BUFFALO HIDE  
MOLESKIN, TWEED & WAXED COTTON**

<b>MOLESKIN</b>	<b>\$399.00</b>
<b>WAXED COTTON</b>	<b>\$389.00</b>
<b>TWEED</b>	<b>\$599.00</b>
<b>BUFFALO</b>	<b>\$625.00</b>

**(JAC-EXV) Men's M-XXL, Woman's S-XL**

Collar & pocket trim in wide whale Corduroy; Bellow Pockets with side entry slash, security and rear game pockets, brass fittings, heavy duty zipper & snaps, side seam release slits with snaps  
plaid liner

**Fabric/Patterns and Colors**

JAC-EXV-WX-003 Storm Glen Waxed Cotton-Caramel

JAC-EXV-TW-003 Tweed Wool

JAC-EXV-900 Molasses Buffalo Nubuck

JAC-EXV-016 Moleskin Camel

**WOMENS S-XL**

W-JAC-EXV-WX-003 Storm Glen Waxed Cotton-Caramel

W-JAC-EXV-TW-003 Tweed Wool

W-JAC-EXV-900 Molasses

W-JAC-EXV-016 Moleskin Camel



900 BUFFALO



JAC-EXV-WX-003



W-JAC-EXV  
-TW-003

016  
MOLESKIN  
CAMEL

WX-003  
WAXED



003  
TWEED





# CROFTERS JACKET

13

**CROFTERS JACKET (JAC-CROF)**

**BUFFALO LEATHER**

**\$400.00**

## Men's M-XXL

The C R O F T E R S Coat is inspired by the rugged, self-reliant farmers & shepherds -- hardy souls determined to cultivate the hardscrabble farms of the Scottish Braes. This simple yet elegant design is crafted from hand selected Buffalo hides with four patch pockets reinforced with rivets and triple stitched.

Fabric/Patterns and Colors

JAC-CROF-031 Nubuck Buffalo

JAC-CROF-023 Antique Brown Waxed Buffalo



031 BUFFALO

023 BUFFALO



031  
NUBUCK

023  
WAXED  
BUFFALO



# EXVENTURER SPORT JACKET

Sport Jackets in Buffalo, Moleskin , Shepherd's Tweed and Waxed Cotton. Belted Bi-Swing sophistication. Thirteen pockets (10 outside, 3 inside). Carry all rear game pocket, Unique

## EXVENTURER SPORT JACKET

<b>TWEED</b>	<b>\$499.00</b>
<b>MOLESKIN</b>	<b>\$399.00</b>
<b>WAXED BUFFALO</b>	<b>\$599.00</b>

### (SJ-EXV) Men's M-XXL

Fabric/Patterns and Colors

SJ-EXV-TW-003 Tweed Wool

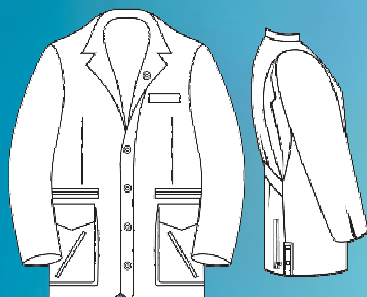
SJ-EXV-015 Moleskin Heavyweight Vintage Weave - Loden

SJ-EXV-016 Moleskin Heavyweight Vintage Weave - Camel

SJ-EXV-021 ExVenturer in Chestnut Wax Buffalo.

Carry all rear game pocket.

SJ-EXV-022 in Black Olive Waxed Buffalo



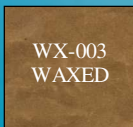
003  
TWEED



SJ-EXV-022



SJ-EXV-TW-003



# ESTATE ARTEMIS SPORT JACKET

15

g back for improved range of motion. Casual fit sport jacket the ultimate in relaxed  
Waxed Buffalo adds to the outstanding patinas only Buffalo hides offer. M - XXL sizing

## ESTATE ARTEMIS SPORT JACKET

Shoulder and elbow patches. Left side gun rest.

Carry-all rear game pocket.

**(SJ-EST-ART) Men's M-XXL**

Fabric/Patterns and Colors

SJ-EST-ART-WX-003 Storm Glen Waxed Cotton-Caramel

SJ-EST-ART-015 Moleskin Heavyweight Vintage Weave - Loden

SJ-EST-ART-016 Moleskin Heavyweight Vintage Weave - Camel

SJ-EST-ART-021 Estate Artemis in Chestnut Waxed Buffalo.



**WAXED COTTON**

**\$400.00**

**MOLESKIN**

**\$425.00**

**WAXED BUFFALO**

**\$650.00**



SJ-WX-ART-003

SJ-EST-ART-016

SJ-EST-ART-021

003  
TWEED



015  
MOLESKIN  
LODEN

016  
MOLESKIN  
CAMEL

# CUMBERLAND LEATHER OVER SHIRT

## CUMBERLAND BUFFALO LEATHER OVER SHIRT

\$305.00

### OS-CUMB) Men's M-XXL

A classic second layer look with function; day or evening town or country. Buffalo hide, stand-up collar, two inside security pockets, brass tack buttons, oversized chest and lower slash pockets.

#### Fabric/Patterns and Colors

OS-Cumb-003 Buffalo Nubuck Cognac

OS-Cumb-023 Waxed Buffalo Antique Brown



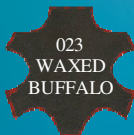
OS-CUMB-003  
BUFFALO



OS-CUMB-003



OS-CUMB-023  
BUFFALO





# LITCHFIELD VEST & TROUSERS

17

## LITCHFIELD BUFFALO NUBUCK VEST (V-LIT)

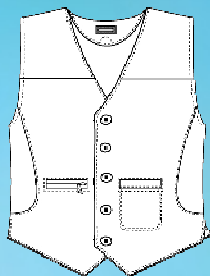
**BUFFALO**

**\$249.00**

### Men's M-XXL

Buffalo hide, unique side-seamed, hidden scalloped pockets, two trimmed in brown leather, full buffalo leather, collarless v-neck design.

V-LIT-097 Rusted Brown Buffalo Nubuck



## LITCHFIELD 7 POCKET PANTS

**MOLESKIN**

**\$249.00**

**BUFFALO**

**\$330.00**

Not what you think. When wearing our incredible Buffalo Nubuck or Moleskin pants, you will NEVER want to wear regular cloth pants again! "Pocket in Pocket" design, unique gusseted crotch insert panel ingeniously delivers a far greater range of motion and freedom of movement, tack button. Buffalo plaid trim pockets and lining to the knee. Plain front. Our Buffalo Nubuck pants breath and are comfortable in THREE SEASONS. Ykk Zipper unfinished 37½ inseam.

### LITCHFIELD MODEL

#### (HN-LIT) Men's 32-46

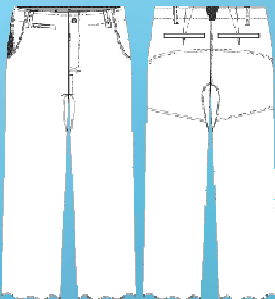
Buffalo Nubuck, Seven pockets, double walled seat.

P-HN-LIT-003 Cognac Buffalo Nubuck

### MOLESKIN

P-HM-LIT-015 Moleskin Heavyweight Vintage Weave - Loden

P-HM-LIT-016 Moleskin Heavyweight Vintage Weave - Camel



015  
MOLESKIN  
LODEN

016  
MOLESKIN  
CAMEL



## ARTEMIS VEST

ARTEMIS VEST/BUFFALO NUBUCK/MOLESKIN

MOLESKIN

\$249.00

BUFFALO

\$280.00

**(V-ART) Men's M-XXL**

The superior look and function of our Artemis shooting vest places it in a class of its own. Whether at an estate shoot or at the club, our Buffalo leather or vintage weave moleskin Artemis vest is sure to impress. Dual ambidextrous gun mount patches, large bellowed shell pockets - Tack button up front and belted back for a close fit.

**In Buffalo Nubuck, MOLESKIN**

Fabric/Patterns and Colors

V-ART-001 Brown Nubuck Buffalo

V-ART-015 Moleskin Heavyweight

Vintage Weave - Loden

V-ART-016 Moleskin Heavyweight

Vintage Weave - Camel

**WOMENS S-XL**

W-V-ART-001 Brown Nubuck Buffalo

W-V-ART-015 Moleskin Heavyweight

Vintage Weave - Loden

W-V-ART-016 Moleskin Heavyweight Vintage Weave - Camel



016

001  
BUFFALO

016



015

015  
MOLESKIN  
LODEN016  
MOLESKIN  
CAMEL001  
BUFFALO



# GLADWIN VEST

19

## GLADWIN VEST

WAXED COTTON  
BUFFALO

\$249.00  
\$280.00

Men's M-XXL, Women's S-XL

*Uplanders take a good look at our new GLADWIN VEST:*

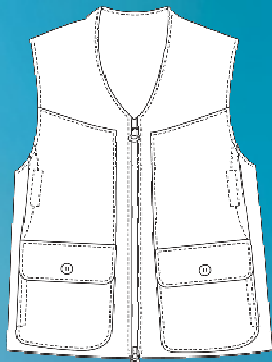
Named after legendary Gladwin Field Trial grounds and steeped in bird dog history and tradition; known nationally as the premiere grounds for the Grand National Cover Dog Championships. Like our new Vest, Gladwin is managed for the express purpose of field trials, and grouse, and woodcock habitat. Enjoy your GladWin Vest in crafted in Storm Glen Waxed Cotton or Buffalo Leather.

Fabric/Patterns and Colors

V-GLDWN-WX-003 Storm Glen Waxed Cotton - Caramel

V-GLDWN-021 Waxed Buffalo leather - Chestnut

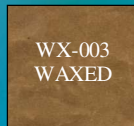
W-V-GLDWN-WX-003 Storm Glen Waxed Cotton - Caramel



V-GLDWN-WX-003



021 BUFFALO









# Tiera

## Natures Technology

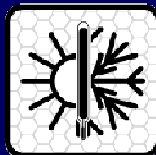
### SUPERIOR FABRIC FOR SUPERIOR SHIRTS

Technically advanced proprietary all-natural Tiera fabric ring spun of Merino wool and long staple cotton resonates with the earth we travel on the way to



#### Cotton & Merino Wonder Fabric:

Tiera is a proprietary blend woven in Merino wool and long staple cotton creating an amazing all-natural performance fabric which is better for the Earth and you.



#### Self-Regulating:

Tiera fabric provides climate control by self-regulating in various temperature spectrums - Cools body when hot and warms body when cold - Merino wool has the best thermo-regulating molecules which = comfort.



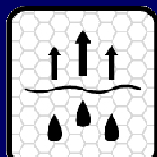
#### Micro Environment Control:

Hydrophobic (water repelling) exterior and Hydrophilic (water loving) interior makes the comfort of Tiera possible. Wool will keep you warmer than cotton if you take a plunge in a cold stream...



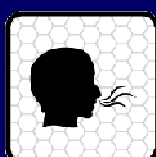
#### Recycle:

Tiera fabrics are of the earth 100% natural, recyclable, sustainable, renewable, and biodegradable.



#### Moisture Control:

Tiera fabric transports moisture in a vapor form keeping you dry and comfortable - Merino wool can absorb 35% of its weight without noticeable dampness.



#### ODOR:

Tiera's ability to control and transport odor away from skin makes it an ideal all-season fabric while maintaining dry, comfortable, air closest to your skin. Less washing required.



#### Strength:

Merino wool is the strongest fiber; wool fibers will bend over 40,000 times before breaking. Merino fibers act like a spring and maintain original shape after stretching.



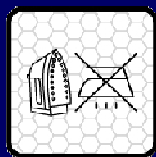
#### Easy Care:

Tiera fabrics can be worn more often without washing or drying and are better for our environment. Sending out to laundries is not required. It also expels spills and does not readily hold stains.



#### Natures Technology:

Made in Mother Nature's factory, Tiera is an all-natural performance fabric that provides climate conditioning.



#### Easier Care:

Merino wool resists wrinkling. Little or no ironing is needed- Merino wool acts like a spring and will snap back into shape. Tiera even helps reduce static.



#### Petroleum Based Alternative:

A superior, durable, luxuriant, and all-natural alternative to synthetics and petroleum-based performance fabrics.



#### Flame Retardant:

Merino is naturally flame resistant, exceeding that of almost all other textile fibers - Enjoy more campfires!

*The goal of Tiera fabric is total comfort, in cold or warm weather, in the field, or on the town.*



# BRÆVAL



**WHY BRÆVAL:** SEVEN TIMES LONGER TO PRODUCE COMPARED TO TYPICAL SHIRT  
 FOURTEEN MORE FEATURES THAN TYPICAL SHIRT  
 TWO TIMES MORE FABRIC FOR OUR PEERLESS "ACTIVE FIT" SIZING  
 TIERA FABRIC- A SUPERIOR FABRIC FOR A SUPERIOR SHIRT.  
 SELF REGULATES IN VARIOUS TEMPERATURES



**Details, Fabric and Fit found no where else.**

**Unsurpassed comfort, In the field or on the town.**

BræVal shirts feature our "Active Fit" sizing- full cut, long in the tails and sleeves, vented bi-swing back, security pocket below belt line, triple stitching, 5" yoke, locker loop, 12 stitches per inch. Engineered to encompass a full range of outdoor activities with features that match sporting pursuits.



*Specific features vary by shirt model.*

# Tiera

**BRAEVAL'S PROPRIETARY NATURAL FABRIC**  
*OF MERINO WOOL AND LONG STAPLE COTTON*  
*Call for lefty's, women's, and other available fabrics*



160 B R A E L O C H Estate Plaid  
 LIT, PAD, EXV, ART



150 Chieftan  
 Micro Check  
 LIT, PAD, EXV, ART,  
 LEFTY



151 Vintage Green  
 Tattersall  
 LIT, PAD, EXV, ART,  
 W-ART



152 Scoutlander Plaid  
 LIT, PAD, EXV, ART



102 Saffron  
 Shetland Flannel  
 Micro Herringbone,  
 100% Cotton  
 LIT



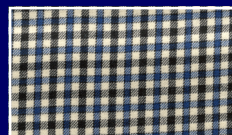
112 Uplander  
 Estate Plaid  
 LIT



120 Uplander Bold  
 Gun Check  
 EXV



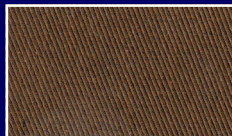
129 Butterscotch Bold  
 Check, All Season  
 100% Cotton Silk Finish  
 LIT, PAD, EXV, ART



130 Gun Check Cream,  
 Black, Blue  
 LIT, PAD, EXV, ART



136 Two Over  
 Tattersall - Blue  
 All Season  
 100% Cotton Silk Finish  
 LIT, PAD, EXV, ART,



200 Brown Cavalry Twill  
 PAD, EXV



600 Rob Roy  
 Highlander Plaid  
 EXV



805 Rangeley  
 District Tartan™  
 LIT, PAD, EXV, ART



## BRAEVAL



For more details go to [www.braeval.net](http://www.braeval.net) • E: [gregor@braeval.net](mailto:gregor@braeval.net)

Braeval Sporting Apparel LLC  
 The Litchfield Hills  
 503 Bantam Road, Litchfield, CT 06759

T: 860-482-7260  
 F: 860-482-7247